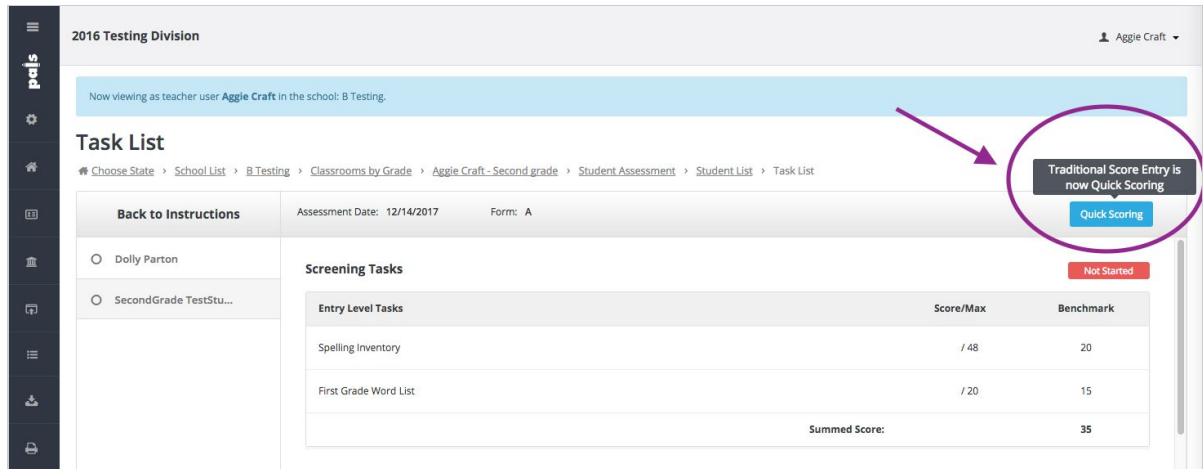


PALS Quick Scoring Tips

Below are some helpful information and tips for using this feature.

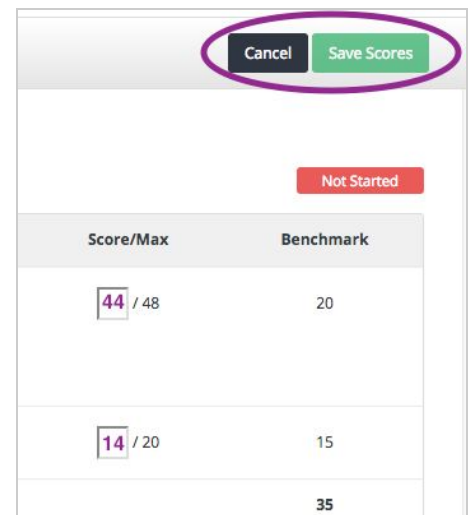
How do I access Quick Scoring?

Click on the blue *Quick Scoring* button at the top right of the assessment task list.



Enter all of your scores in the boxes that appear. The green *Save Scores* button will light up and become clickable once scores are entered.

Don't forget to click *Save Scores* after you have entered scores.



What is the difference between Quick Scoring and Regular (item-level) Scoring?

Quick Scoring is a new and improved version of "Traditional Score Entry." Regular, or item-level scoring, is what you may remember as the Online Assessment Wizard. Regular scoring gives the most detailed, item-level scores you can get from PALS. Regular scoring also provides more information and additional reports.

Can I use both Quick Scoring and Regular Scoring for the same student?

Yes, you can switch back and forth between Quick Scoring and item-level scoring while entering scores for one student. Example: If a kindergarten student is non-responsive for the Rhyme Awareness

task and you want to just enter a “0,” Quick Scoring allows you to do this. You might still want to use item-level scoring for the Lowercase Alphabet Recognition and Letter Sounds tasks, though, to produce those more detailed reports.

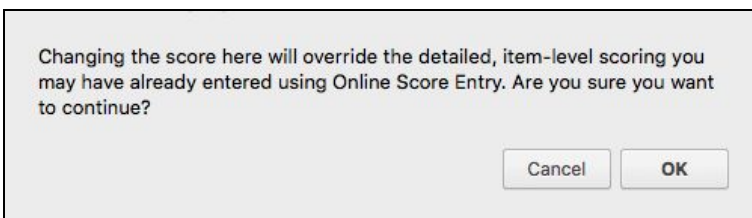
You may also want to use Quick Scoring for one student and regular (item-level) for another. If a student has achieved maximum possible scores on most or all tasks, and you do not need item-level data, it would make sense to use Quick Scoring for that student.

What happens if I enter a score incorrectly? Can I change it?

Yes! Click on the blue Quick Scoring button. You will notice little “X”s next to the scores. Click the X next to the score you want to change.

A warning about changing scores will pop up.

Read and click accordingly:



Score/Max	Benchmark
44 / 44 x	10
20 / 20 x	10
26 / 26 x	21
90	41

Completed

Score/Max	Benchmark
44 / 44 x	10
20 / 20 x	10
20 / 26	21
Summed Score:	90
	41

Enter the new score.

Click Save Scores.

Score/Max	Benchmark
44 / 44	10
20 / 20	10
20 / 26	21
Summed Score:	84
	41

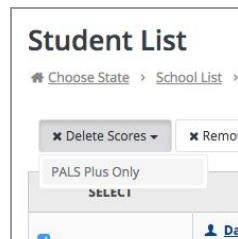
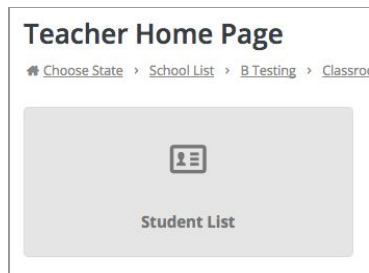
Is changing the scores for one task in Quick Scoring the same as deleting the scores?

No. You can only *change* scores using Quick Scoring at this time. It will not currently allow an empty field to be saved when trying to change the score.

So, how do I delete a student's scores permanently for this assessment window?

You can delete scores on your *Student List* page. Go to your home page. Click the *Student List* tile. Check the box next to the student's name. Click on *Delete Scores*. Select which scores you want to delete. (This dropdown is necessary for districts who are assessing in both English and Spanish.)

At this time, it is not possible to delete scores for an individual task.



With Traditional Score Entry, sometimes I thought I had administered all tasks, and I didn't find out that I forgot one until I went to reports and found that not all students had an instructional oral reading level. Is Quick Scoring different?

Yes! It's true that with Traditional, there was no prompting to administer additional word lists or passages to complete diagnostic tasks. The great thing about Quick Scoring is that the required tasks are prompted.

If you want to be guided through the entire Diagnostic portion, the system will show you what to do next. If you see *In Progress* to the right of the Diagnostic tasks, that means you need to enter more data to get a reading level.

Screening Tasks			Completed
Entry Level Tasks	Score/Max	Benchmark	
Spelling Inventory	88 / 88	50	
Third Grade Word List	20 / 20	15	
Summed Score:	108	65	

Diagnostic Tasks			In Progress
Entry Level: Word Knowledge	Score/Max	Benchmark	
Fourth Grade Word List	13 / 20		
Level A: Oral Reading in Context	Score/Max	Benchmark	
Ocean Cities	/ 232	90	

You can stop while the Diagnostic Tasks are In Progress, but to get an Instructional Reading Level, you will want to administer that next task. When you save the Quick Scores, the system prompting will update.

Once you save your scores using Quick Scoring, the task list page will update to show whether screening and diagnostic tasks have *Not Started*, are *In Progress*, or are *Completed*. You can track your progress each time you click *Save*. To get back to Quick Scoring, simply click the blue *Quick Scoring* button.

How can I be sure that I've entered my spelling scores correctly for Grades 1-3?

When you click on the blue Quick Scoring button, the boxes will appear for individual features, total words correct and total score.

Entry Level Tasks	Score/Max	Benchmark
Spelling Inventory	<input type="text"/> / 48	20
Feature Scores		
Beg/End Sounds <input type="text"/>	Digraphs <input type="text"/>	Blends <input type="text"/>
Short Vowels <input type="text"/>	Nasals <input type="text"/>	CVCe <input type="text"/>
Words Correct <input type="text"/>		
Long Vowels <input type="text"/>	R&L Infl. <input type="text"/>	Amb. Vowels <input type="text"/>
Syll. Junc. <input type="text"/>	Affixes <input type="text"/>	Derivations <input type="text"/>

Enter these first!

Enter the *Feature Scores* and *Words Correct* scores first. The total score will automatically calculate! Remember to click *Save*.

Entry Level Tasks	Score/Max	Benchmark
Spelling Inventory	27 / 48	20
Feature Scores		
Beg/End Sounds <input type="text" value="4"/>	Digraphs <input type="text" value="4"/>	Blends <input type="text" value="4"/>
Short Vowels <input type="text" value="4"/>	Nasals <input type="text" value="3"/>	CVCe <input type="text" value="2"/>
Words Correct <input type="text" value="4"/>		
Long Vowels <input type="text" value="2"/>	R&L Infl. <input type="text" value="1"/>	Amb. Vowels <input type="text" value="0"/>
Syll. Junc. <input type="text" value="0"/>	Affixes <input type="text" value="0"/>	Derivations <input type="text" value="0"/>

Two important notes:

1. Only the features within each grade level portion of the list are calculated into the total score. If you choose to go further than the first grade list for a first grader, only required words will show up in the total score. The same thing will occur if you are assessing a second grader and choose to give the third grade words. This is so you can accurately compare Total Spelling Scores to benchmarks.
2. You must enter feature score if you want to use the grouping function after using Quick Scoring.

How can I be sure that I've entered my spelling scores correctly for Grades 4-8?

All of the same rules above apply for entering scores for grades 4-8, with one exception: the Assumed Letter Name Constant.* The Assumed Letter Name Constant for the grade you're assessing will automatically be calculated into the Total Spelling Score.

Entry Level Tasks						Score/Max	Benchmark
Spelling Inventory						<input type="text"/> / 88	50
Feature Scores						Words Correct <input type="text"/>	Assumed Letter Name Score: 32
CVCe <input type="checkbox"/>	Long Vowels <input type="checkbox"/>	R&L Infl. <input type="checkbox"/>	Amb. Vowels <input type="checkbox"/>	Syll. Junc. <input type="checkbox"/>	Affixes <input type="checkbox"/>		
Derivations <input type="checkbox"/>							

Enter these first!

Once Feature Scores and Words Correct are entered, the Total Spelling Score will be calculated for you.

**During development of PALS for grades 4-8, a "Letter Name Constant" was created to shorten spelling screening time, representing expectation of mastery of earlier (Letter Name) features by this grade level. (See the [PALS Plus Technical Reference](#) for more information.) The 1-3 Spelling task is available as an optional task for students for whom teachers need specific diagnostic information about Letter Name feature mastery for students who are reading and spelling below grade level.*